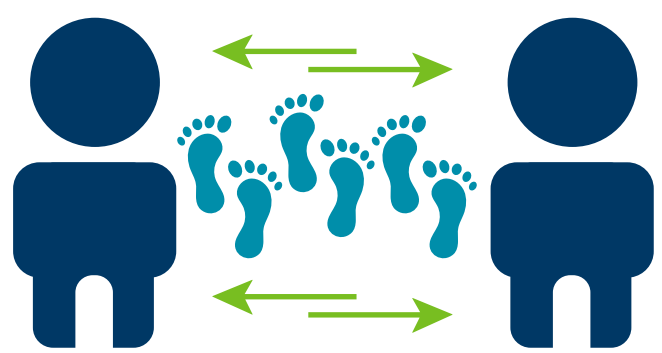
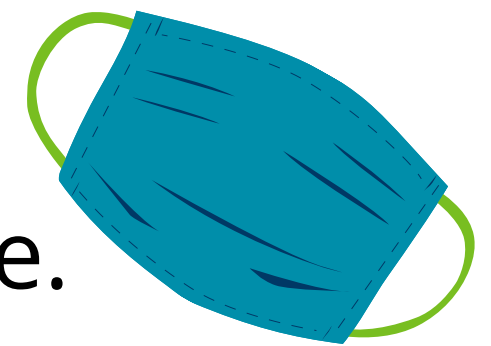


2021 ENGINEERING MACHINE DESIGN CONTEST

5 Top Tips for Staying COVID Safe While Building Your Machine

1

ALWAYS **wear a mask** when more than one team member is working on your machine at the same time.



2

WHEN possible **social distance** while working on your machine.

3

ALWAYS **spend less than 15 consecutive minutes together** while working on your project. Take a 2 min break - a “social distance break” and back to work.



4

Have a **scheduled time** when each team member works on a part of the machine if social distancing can not be achieved.



5

Limit the number of team members working directly on the machine at any one time.

Maybe break it up into engineering pieces. (An example is you could break it into “engineering groups”...the “chemistry step” group will work on from 4-5 today, followed by the “electrical step group”).

Acknowledgement: Content developed by Devin Schwiesow

engineering.mnsu.edu/engineering-machine-design-contest



MINNESOTA STATE
Engineering Center of Excellence

A member of the Minnesota State system and an Affirmative Action/Equal Opportunity University. This document is available in alternative format to individuals with disabilities by calling Engineering Center of Excellence at 507-389-1201 (V), 800-627-3529 or 711 (MRS/TTY).